

City of Gainesville/Alachua County Call to Artists

The City of Gainesville Department of Parks, Recreation and Cultural Affairs Art in Public Places Trust invite artists or artist teams to submit applications for the Rosa Parks Regional Transit Service (RTS) Downtown Station.

Background

The City of Gainesville Regional Transit System (RTS) has provided public transportation to the City of Gainesville and adjacent areas of Alachua County for over 31 years. RTS is a department of the City of Gainesville within the Public Works Department, and operates a fleet of 88 buses on its fixed-route system within a service area of approximately 74 square miles. This fixed route system consists of 38 routes, including ten routes serving the University of Florida campus. Currently, MV Transportation, under contract with RTS, provides par transit services to the community.



The University of Florida and the City of Gainesville developed a partnership during fiscal year 1997 that resulted in pre-paid unlimited transit access for all University of Florida students, staff and faculty. Tremendous demand for transit services and increases in transit ridership are just two results of the highly successful partnership between the City of Gainesville RTS and the University of Florida. This partnership was developed to provide pre-paid unlimited access to transit for all University

of Florida students, staff and faculty. The Rosa Parks RTS Downtown Station is located at the corner of SE 3rd Street and Depot Avenue and serves as the main bus transfer station for RTS.

RTS vision statement: *"To provide our community with a safe, courteous and reliable transportation alternative."*

City of Gainesville Art and Public Places Trust

The Art in Public Places Trust is an Alachua County and City of Gainesville appointed five-member citizen advisory board established to manage and oversee the purchase of public art.

Project Details

The public artwork will be installed at the Rosa Parks RTS Downtown Station. The space allows for lighting, tile, panels and paving of the artist's design, choice and materials. The theme is left to the artist's discretion, but the artist may choose to use the title of the station (Rosa Parks) as inspiration for the design.

This public art project will enhance the aesthetic quality of the busy downtown bus station for those who use its services everyday. The artwork will be accessible and contribute to Gainesville's community pride.

Budget

The Art in Public Places Trust is requesting proposals to include the allocated amount required for services rendered. The total budget is \$13,000. The budget must include all design costs and/or costs to the artist i.e. design coordination, site design, insurance, construction drawings, travel and sales tax.

Artist Eligibility

This project is open to all artists who are eligible to work in the United States, age 18 and over. Artist teams are eligible to apply, including teams of artists from multiple disciplines.

Selection Process

Based on proposal images and support materials, the submissions will be reviewed and selected by the City of Gainesville Art in Public Places Trust. The selection committee, consisting of APPT Advisory Board and RTS representatives will select up to three finalists for interviews.

Application Materials:

One artist or a team of artists will be selected after the following information has been reviewed. The following documentation must arrive by the **postmark deadline of Friday, August 14, 2009**:

- 1. Letter of Interest:** This one page maximum letter should outline the artist's approach to public art. Please highlight relevant past experience on projects of similar budget and scope.
- 2. General Design Concept/Theme Proposal:** Describe your overall "theme" and style of artwork. Include artist name, fees, for all service, drawings, and any additional services provided upon invoice. Explain your proposed schedule, process, medium and method by which you will involve the Downtown RTS Bus Station users in concept development and/or design development.
- 3. Professional Resume:** Resumes should not be more than two pages. Please note that artist teams should submit a resume for each team member.
- 4. Fabrication and Installation:** Describe the anticipated fabrication and installation needs for the permanent art work.
- 5. Annotated Image List:** The image list must be provided with the Artist's name, title, location, medium, dimensions, date of work, budget, the corresponding image number and short description of images (up to 10 maximum). The format for this submission should be on a CD in .jpg format, with each image no larger than 1MB.
- 6. Return Envelope:** Self-addressed and stamped.

Mail Application Materials (Postmarked by August 14, 2009) to:

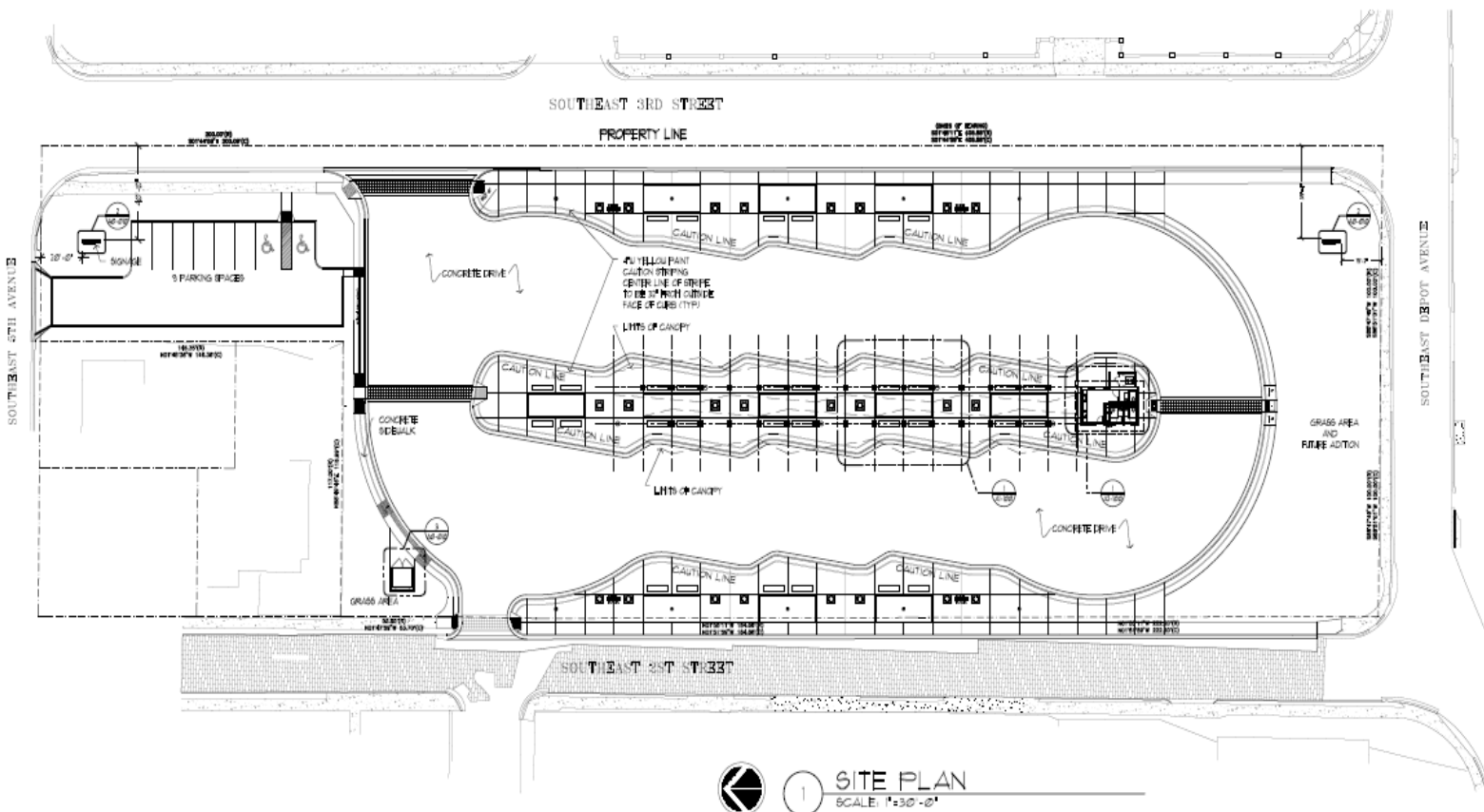
City of Gainesville Art in Public Places Trust
Rosa Parks RTS Downtown Station
Department of Parks, Recreation, and Cultural Affairs
Station 30 PO Box 490
Gainesville, FL 32602-0490

Inquiries

For additional questions please contact Erin Friedberg, Visual Arts Coordinator, City of Gainesville Division of Cultural Affairs, (352) 393 – 8532.
E-mail: friedberh@cityofgainesville.org

Additional Resources

- Department of Parks, Recreation and Cultural Affairs programs and services www.gvlculturalaffairs.org
- RTS <http://www.go-rts.com/>



Site Photos:

